

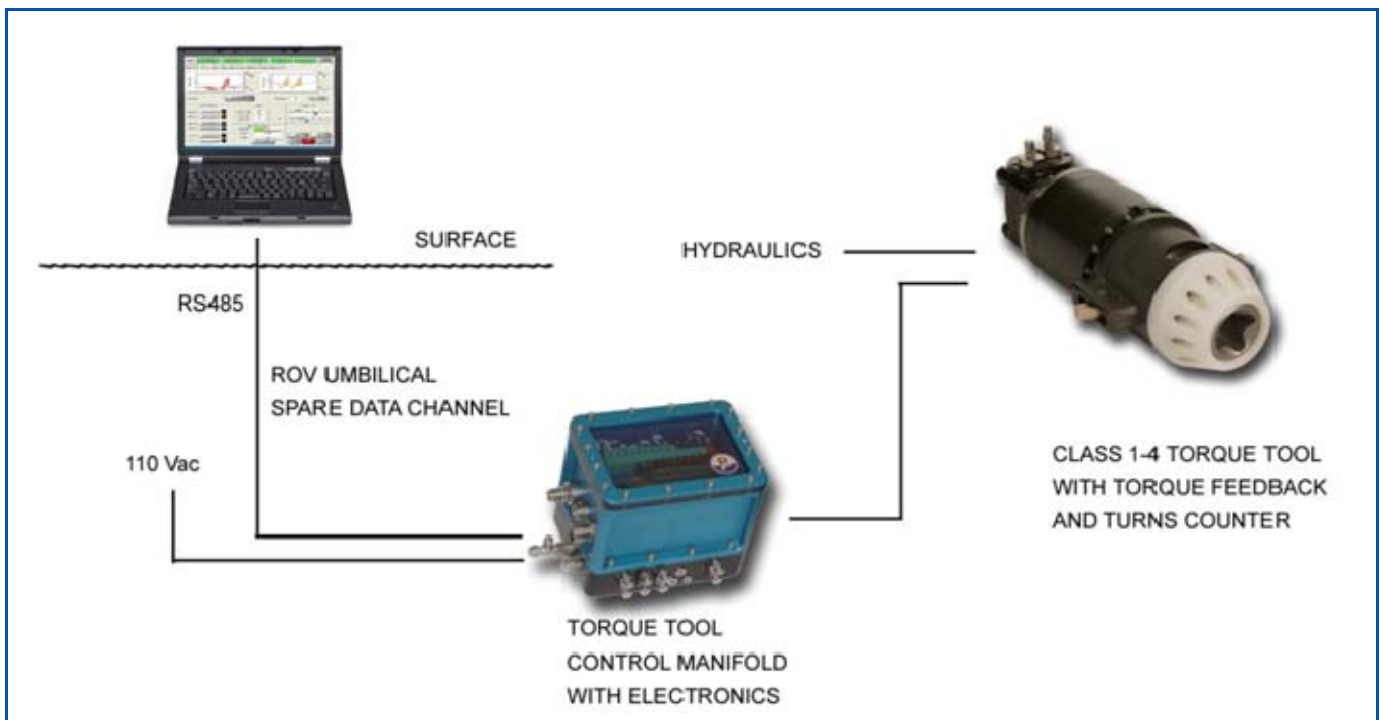
# Torque Tool Remote Control Unit

The Torque Tool Remote Control Unit allows the user, from the surface, to adjust the torque and speed. This system is particularly suitable for deepwater operations where torque required for a particular operation may be uncertain, or has multiple values for different operations on the same dive. The actual torque and speed is user controlled and measured at all times and recorded as a signature of the subsea operation for future reference. Three versions of the controller are available, with various flow capacities and additional functions.

The controller can be used with any torque tool supplied by PSS (and most non-PSS tools). The system can also be used as a pressure/flow controller for tools not equipped with feedback sensors.

## Features

- Range of products to suit client requirements
- Compact Design
- Easy to use software

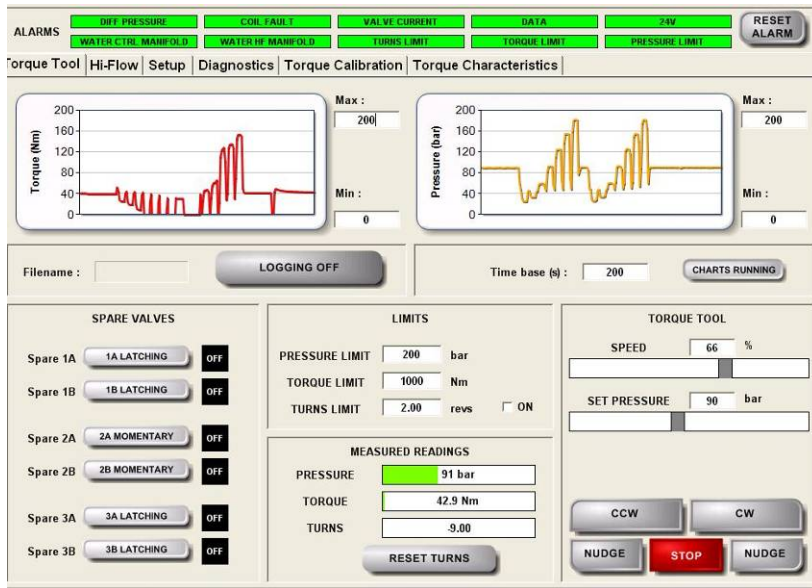


## Torque Tool Control Screen

The PSS software is fully featured, including, for example:

- User selected operating modes
- Torque setting
- Pressure setting
- Torque feedback
- Torque/pressure/turns limits
- User selected labels
- Clear diagnostics
- Imperial/metric units
- Data logging & charting
- Calibration routine

Note: that PSS software does not need “dongles”



## Specifications

	Single Station Valve Pack	Torque Tool Standard Pack	Multipurpose Valve Pack
Switching Stations:	No	3 x NG3mini	4 x NG3mini
Proportional Pressure and flow (bi-directional)	NG6-20 lpm	NG3mini-8 lpm	NG4-12 lpm
Pressure Sensor (on the reduced pressure line)	Yes	Yes	Yes
Manual pressure relief	No	Yes	Yes
Strain gauge input and counter input (for torque tools)	Yes	Yes	Yes
110v Transformer	Yes	Yes	Yes
Differential Pressure Sensor (for suction anchor ops)	No	No	Option
Integral Ground Fault detection	Yes	Yes	Yes
Expansion Connector for Satellite manifolds	No	Yes	Yes
High flow (satellite option) for suction anchors etc.	No	Option	Option

Note: Option indicates feature is available but not as standard product and needs to be requested at time of order

Recommended Hydraulic Supply	:	20 lpm @ 200 Bar (6gpm at 3000 psi)
Data Channel	:	RS485 Half Duplex
Proportional Pressure Control	:	0-200 Bar

Data Sheet: A001-350-024 issue 7

The specification details are illustrative for marketing purposes only. Actual equipment may be different as a result of product improvement or other reasons. Specific interface and performance information should be reconfirmed at time of order placement.