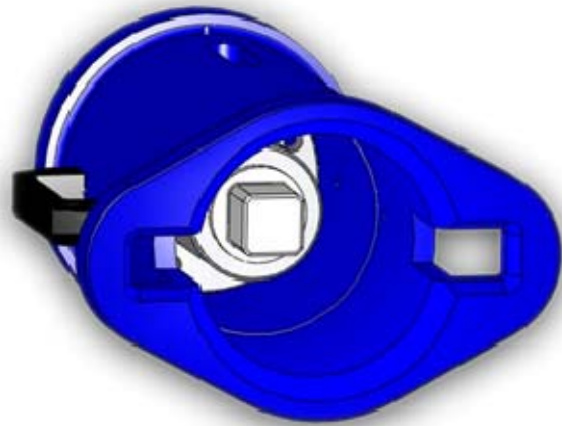


Class 1-4 Torque Verification Unit

This unit is used to give pre-dive surface confirmation of the torque tool calibration. It consists of a standard ISO class 1-4 torque reaction bucket and a rear mounted flange type torque sensor. The torque shaft is mounted on the rearmost flange of the sensor. To change shafts only one bolt has to be undone. Torque is displayed on a hand held digital display unit.

Features

- ISO 13628-8 Fig 18; Class 1-4
- 2000 ft lbs
- Hand Held Digital Read Out
- Easily Interchangeable Shafts

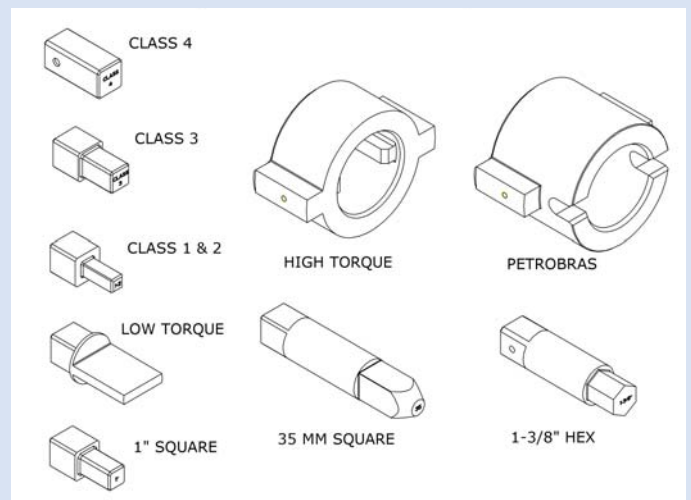


Specifications

Standard Interface:	ISO 13628-8 Fig 18, Class 1-4 Bucket, Multiple Interface Options
Materials:	Steel Shaft, Aluminium Housing, Plastic Handles
Estimated Weight:	16 kg in air
Sensor Details:	2000 ft lbs Range, Sealed to IP65, c/w Cable, Display, Battery Powered

Data Sheet: A001-350-014 issue 5

Interface Options



The specification details are illustrative for marketing purposes only. Actual equipment may be different as a result of product improvement or other reasons. Specific interface and performance information should be reconfirmed at time of order placement.