

# 500mm Thruster

The PSSL 500mm thruster is used on PSS trenching ROVs. It uses a 4-blade cropped propeller to provide high thrust across the range. The performance is almost balanced forward/reverse.

The design is robust and proven. The drive motor is axial piston type and drives the main shaft, which is set in robust bearings. The propeller and the motor supports are in aluminium and the duct is in plastic.

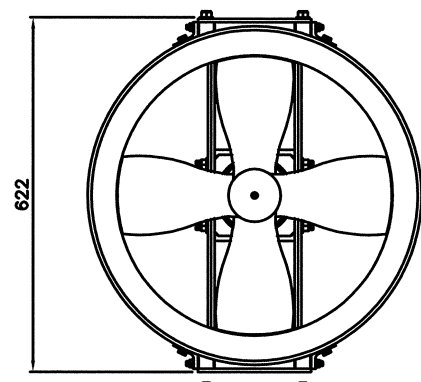
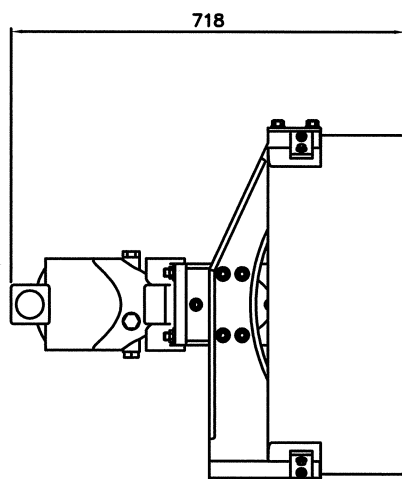
Unlike many suppliers, every PSS thruster is individually performance tested in our tank facility and the figures quoted are actual not theoretical.

## Features

- ISO 13628-8 Class 1 and 2
- Paddle/T-Bar Interface
- 120 ft lbs/160Nm
- Torque Feedback



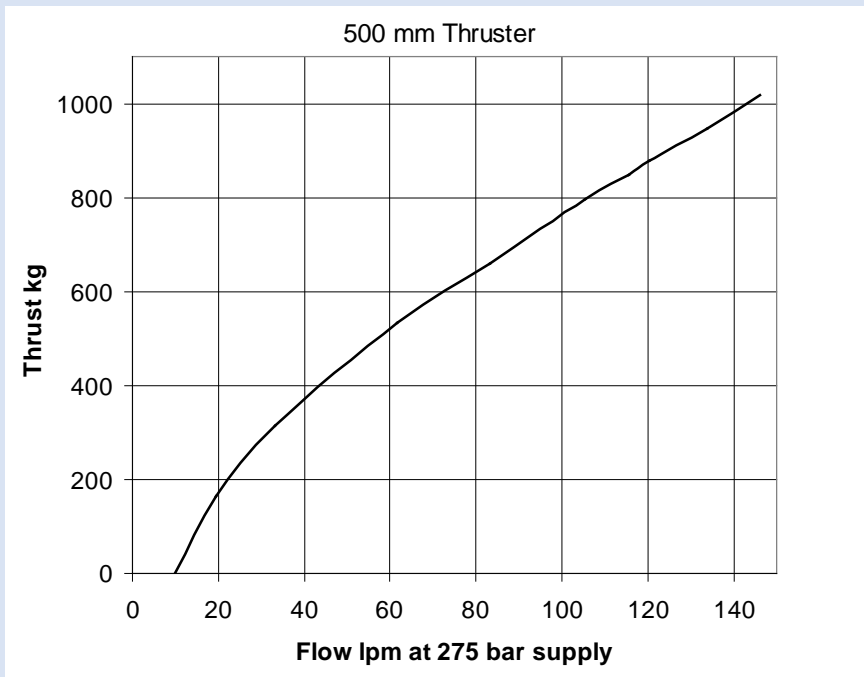
## Details



## Specifications

Max Thrust:	1016 kgf Forward / 954 kgf Reverse
Operating Pressure:	275 bar
Maximum Flow:	146 lpm
Motor Displacement:	92 cc
Weight in air/water:	95 / 40 kg approx

Effective thruster performance from the submersible ROV requires full consideration of available flows, pressures, configuration and the hydraulic control system. PSS engineering team is available to advise the most effective combination for each application



Data Sheet: A001-350-020 issue 5

## Options

- Fixed Displacement Control
- Variable Displacement (Swash) Control, Pilot Pressure Operated

The specification details are illustrative for marketing purposes only. Actual equipment may be different as a result of product improvement or other reasons. Specific interface and performance information should be reconfirmed at time of order placement.