

300mm HP Thruster

The PSSL 300mm thruster is used on several PSS ROVs, typically on the laterals of 75kW systems and higher. It has a higher power motor than the standard 300 mm thruster and uses a 4 blade cropped propeller to deliver greater thrust at higher speed.

The design is robust and proven. The drive motor is axial piston type and drives the main shaft, which is set in robust bearings. The propeller and the motor supports are in aluminum and the duct is in plastic.

Unlike many suppliers, every PSS thruster is individually performance tested in our tank facility and the figures quoted are actual not theoretical.

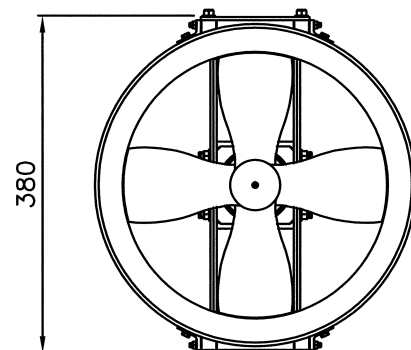
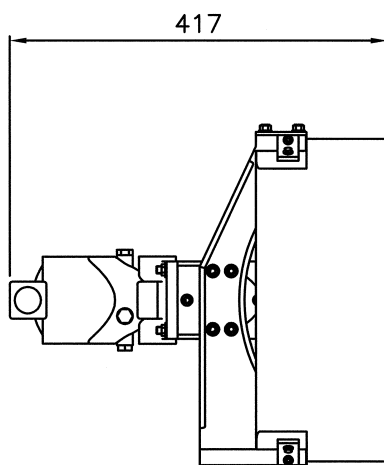
The thruster is available in either variable displacement (swash) control or as fixed displacement.

Features

- Proven Design
- Every Unit Performance Tested
- Fixed Displacement or Variable Displacement Control Available



Details



Specifications

Max Thrust:	310 kgf Forward / 320 kgf Reverse
Operating Pressure:	230 bar
Maximum Flow:	65 lpm
Motor Displacement:	33 cc
Weight in air/water:	19 / 13 kg (with Aluminum Motor)

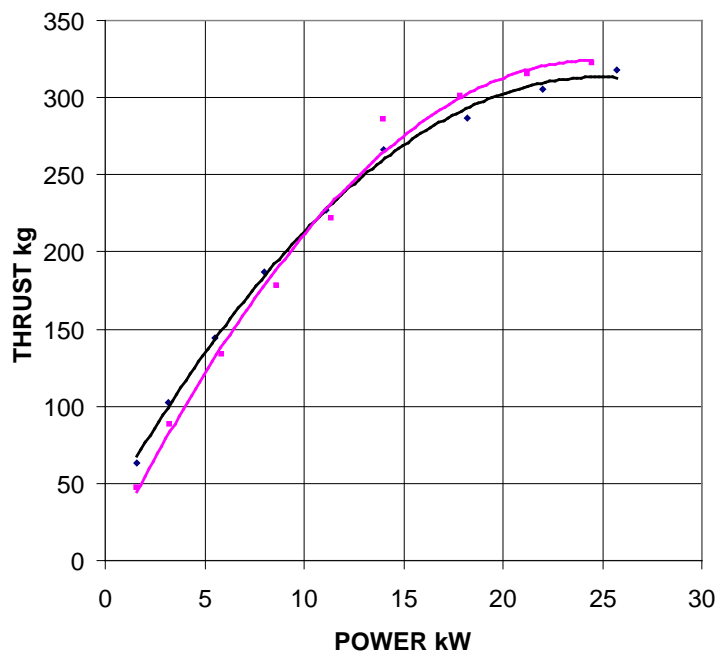
Effective thruster performance from the submersible ROV requires full consideration of available flows, pressures, configuration and the hydraulic control system. PSS engineering team is available to advise the most effective combination for each application

Data Sheet: A001-350-028 issue 5

Options

- Fixed Displacement Control
- Variable Displacement (Swash) Control with Integrated Position Sensor
- Aluminum Motor Body for Reduced Weight

Thrust vs Power
12" High Power-33 cc Fixed Displacement



The specification details are illustrative for marketing purposes only. Actual equipment may be different as a result of product improvement or other reasons. Specific interface and performance information should be reconfirmed at time of order placement.