

TA60 Grabber Manipulator

The TA60 is a high performance robust 4 degrees-of-freedom grabber designed for the most arduous lifting and gripping operations. It has been developed to particularly suit the latest generation of workclass Remotely Operated Vehicles and incorporates many operational enhancements to earlier generations. With a capacity of 380 kg and a wrist torque of 250 Nm delivered through heavy duty bearings, the TA60 outperforms all competitors in its class.

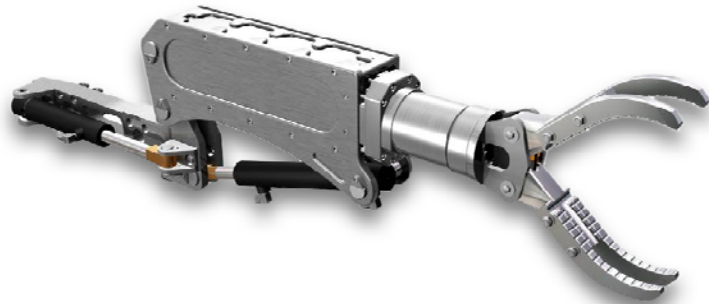
The TA60 can also be provided with a variety of end effectors including parallel or intermeshing jaws, suction foot and tooling interfaces.

The TA60 has heavy duty claws. The ID jaw type is shown, having the 285mm intermeshing jaw favored by many operators. The LD option has a floating 305mm jaw action, similar to the industry standard TA16 manipulator.

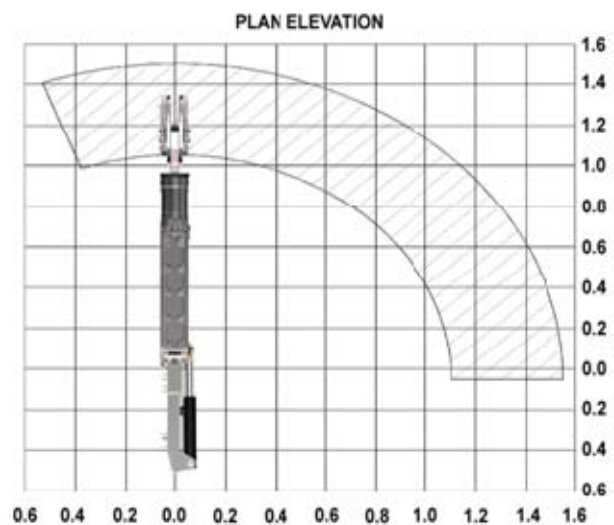
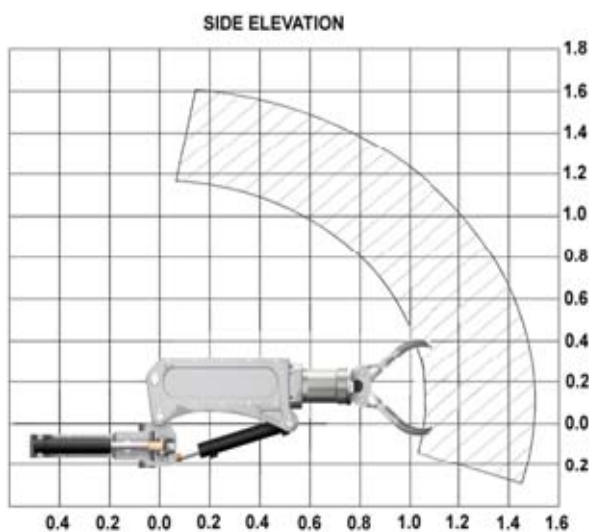
Constructed in marine grade aluminum and stainless steel it has a low weight in water and is engineered for ease of maintenance. The TA60 is the standard in ROV grabbers.

Features

- Heavy Duty
- High Performance
- Variety of End Effectors



TA60 Operational Envelope



Specifications

Options

	TA60 ID Grabber	TA60 LD Grabber
Degrees of Freedom:	4 plus end effector	4 plus end effector
Maximum Reach:	1410 mm	1440 mm
Shoulder Slew:	110°	110°
Shoulder Pitch:	100°	100°
Extend:	300 mm	300 mm
Wrist Rotate:	Continuous	Continuous
Jaw Size:	285 mm	305 mm
Jaw Type:	4 finger intermeshing	3 finger floating
Lift Capacity (Extended):	300 kg	300 kg
Lift Capacity (Retracted):	380 kg	380 kg
Wrist Rotate Torque:	250 Nm	250 Nm
Jaw Grip Force:	3500 N	5000 N
Weight in Air:	78 kg	82 kg
Weight in Water:	57 kg	60 kg
Oil Supply Pressure (min):	207 bar (3000 psi)	207 bar (3000 psi)
Oil Supply Flow Rate:	9 lpm	9 lpm
Mounting:	Left Hand (Standard)	Left Hand (Standard)

- 100 mm parallel jaw, 150 mm 3 finger jaw
- Suction foot
- Right hand mounting (can be reconfigured by user)

Data Sheet: A001-350-045 issue 4



Also
available with
Suction Foot
or 305mm
Floating Jaw



The specification details are illustrative for marketing purposes only. Actual equipment may be different as a result of product improvement or other reasons. Specific interface and performance information should be reconfirmed at time of order placement.