

# TA60J Grabber Manipulator

The TA60J is a high performance robust 4 degrees-of-freedom grabber designed for the most arduous lifting and gripping operations. It has been developed to particularly suit the latest generation of small/intermediate workclass Remotely Operated Vehicles and incorporates many operational enhancements to earlier generations. With a capacity of 380 kg and a wrist torque of 250 Nm delivered through heavy duty bearings, the TA60J outperforms all competitors in its class.

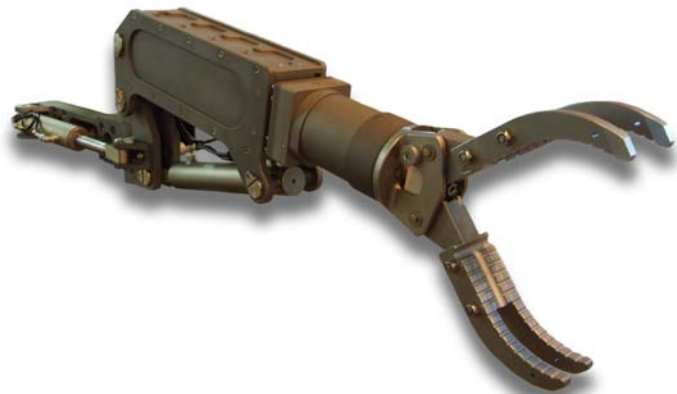
The TA60J can also be provided with a variety of end effectors including parallel or intermeshing jaws, suction foot and tooling interfaces.

The TA60J has heavy duty claws. The ID jaw type is shown, having the 285mm intermeshing jaw favored by many operators. The LD option has a floating 305mm jaw action, similar to the industry standard TA16 manipulator.

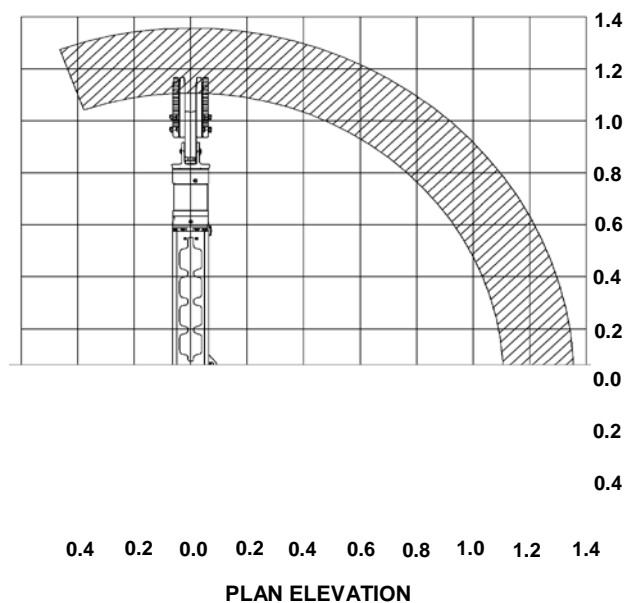
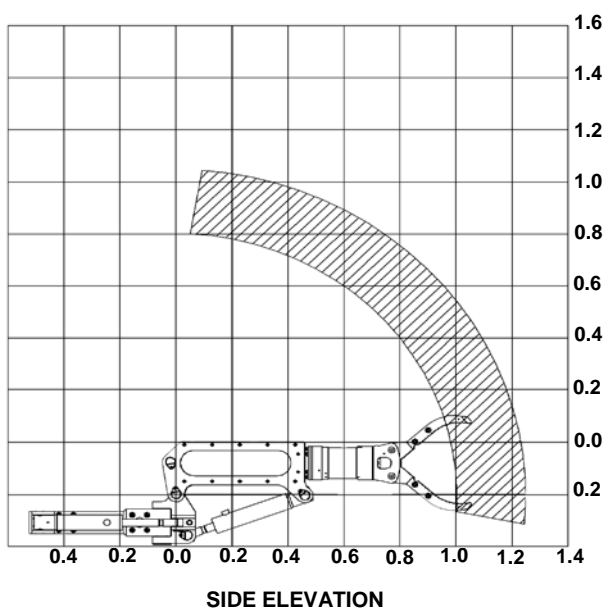
Constructed in marine grade aluminum and stainless steel it has a low weight in water and is engineered for ease of maintenance.

## Features

- Heavy Duty
- High Performance
- Variety of End Effectors



TA60J Operational Envelope



Specifications			Options
	<b>TA60J ID Grabber</b>	<b>TA60J LD Grabber</b>	<ul style="list-style-type: none"> <li>■ 100 mm parallel jaw, 150 mm 3 finger jaw</li> <li>■ Suction foot</li> <li>■ Right hand mounting (can be reconfigured by user)</li> </ul>
Degrees of Freedom:	4 plus end effector	4 plus end effector	
Maximum Reach:	1350 mm	1380 mm	
Shoulder Slew:	110°	110°	
Shoulder Pitch:	100°	100°	
Extend:	250 mm	250 mm	
Wrist Rotate:	Continuous	Continuous	
Jaw Size:	285 mm	305 mm	
Jaw Type:	4 finger intermeshing	3 finger floating	
Lift Capacity (Extended):	300 kg	300 kg	
Lift Capacity (Retracted):	380 kg	380 kg	
Wrist Rotate Torque:	250 Nm	250 Nm	
Jaw Grip Force:	3500 N	5000 N	
Weight in Air:	71 kg	76 kg	
Weight in Water:	47 kg	51 kg	
Oil Supply Pressure (min):	207 bar (3000 psi)	207 bar (3000 psi)	
Oil Supply Flow Rate:	9 lpm	9 lpm	
Mounting:	Left Hand (Standard)	Left Hand (Standard)	

Data Sheet: A001-350-081 issue 1



The specification details are illustrative for marketing purposes only. Actual equipment may be different as a result of product improvement or other reasons. Specific interface and performance information should be reconfirmed at time of order placement.