

TA16 Grabber Manipulator

The robust TA16 is a versatile and powerful unit which fully complements the Perry Slingsby Systems' range of seven function manipulators.

The TA16 is a 4 degrees-of-freedom rate controlled manipulator/grab for universal mounting to a variety of submersibles.

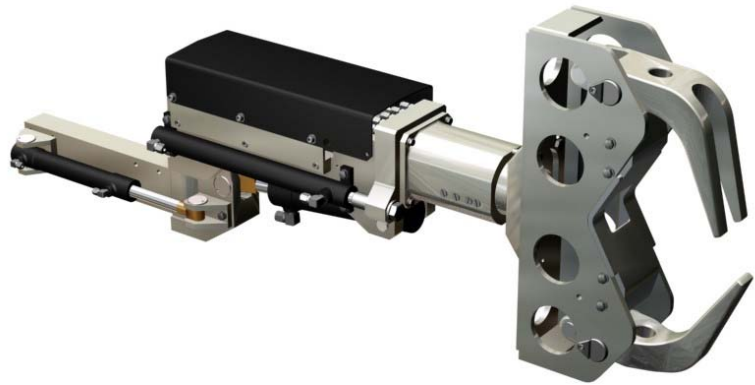
The TA16 is designed for either right or left handed control and is capable of performing subsea maintenance on cables and pipelines. The unit features a 300mm extension and, with the grab option is capable of gripping from 50mm to 300mm diameter pipes with a grip force up to 272kg. The TA16 can be supplied with a variety of different end effectors including jaws up to 1220mm opening and a suction foot.

It is manufactured in marine grade aluminum alloy with stainless steel fasteners providing a low weight in water.

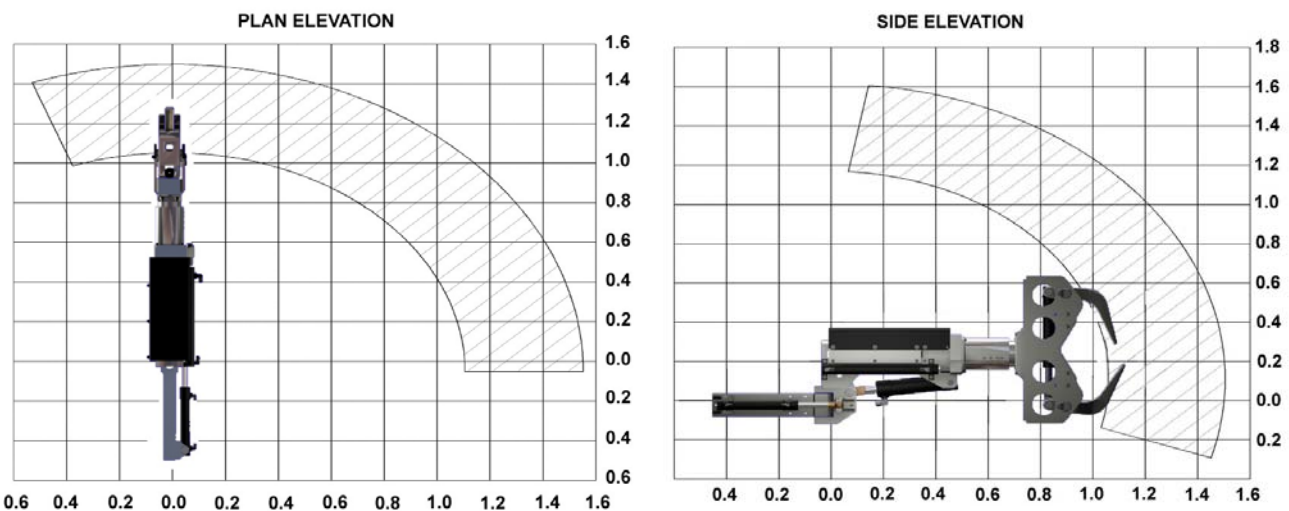
The TA16 is a well proven design with over 150 units in operation.

Features

- Medium Duty
- Variety of End Effectors
- Left or Right Handed
- Industry Standard



TA16 Operational Envelope



Specifications

Degrees of Freedom:	4 plus end effector
Maximum Reach:	1060 mm
Lift Capacity (Extended):	102 kg
Lift Capacity (Retracted):	147 kg
Claw Rotation Torque:	108 Nm
Rotation:	340° Std (Continuous Option)
Claw Grip Force 12":	2225 N
Claw Grip Force 6":	445 N
Jaw Size (Standard A):	305 mm (12")
Jaw Size (Standard B):	150 mm (6")
Large Jaw Options:	610 mm (24") 915 mm (36") 1220 mm (48")
Weight in Air:	50 kg
Weight in Water:	40 kg
Oil Pressure:	165 bar (2,400 psi) to 210 bar (3,000 psi)
Flow Rate (max):	9 lpm
Mounting:	Left hand (standard) , right hand (option)

Data Sheet: A001-350-043 issue 4



Also available
with Suction
Foot or 6"
Scissor Jaw



The specification details are illustrative for marketing purposes only. Actual equipment may be different as a result of product improvement or other reasons. Specific interface and performance information should be reconfirmed at time of order placement.