

Hydraulic Hot Stab Type A

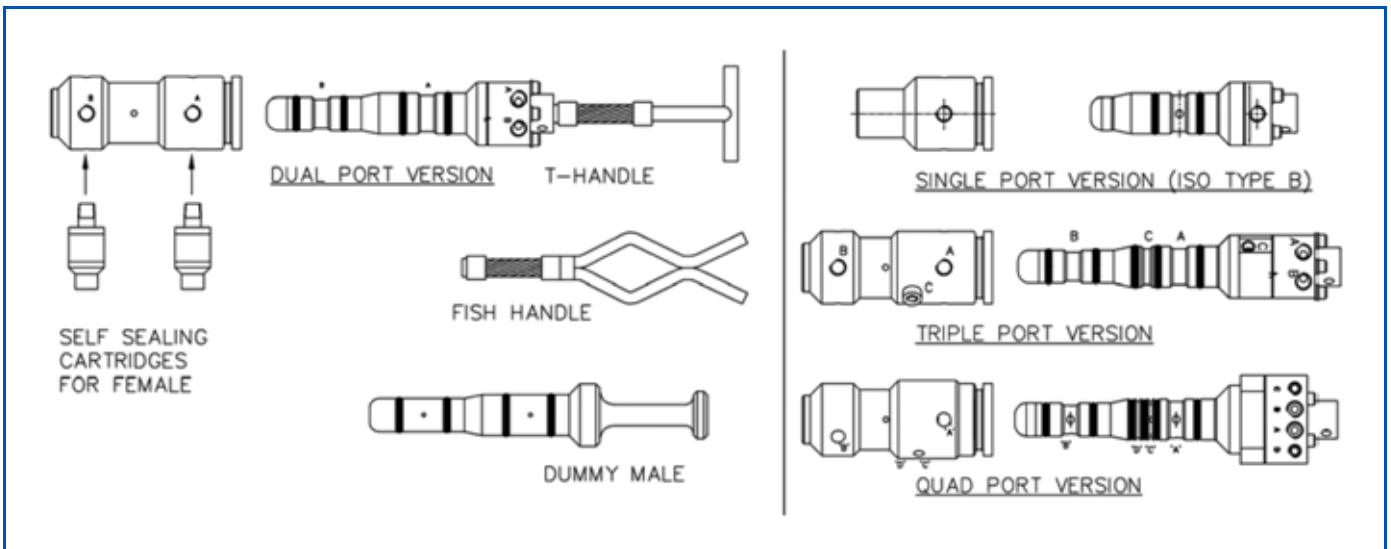
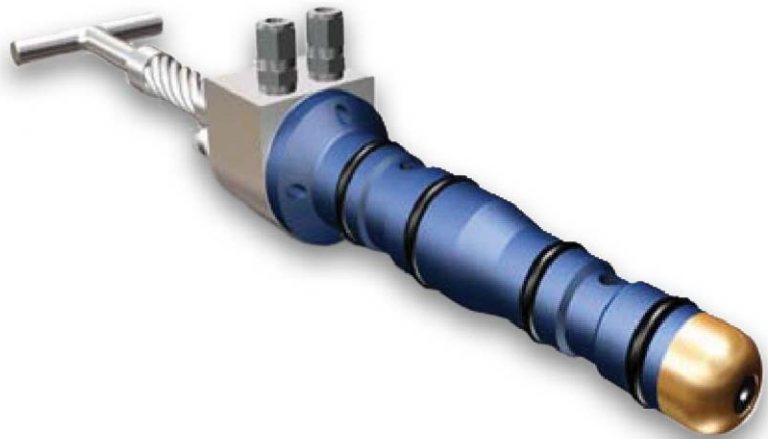
The dual port conforms to ISO 13628-8, but has larger internal fluid paths and integral sealing valves.

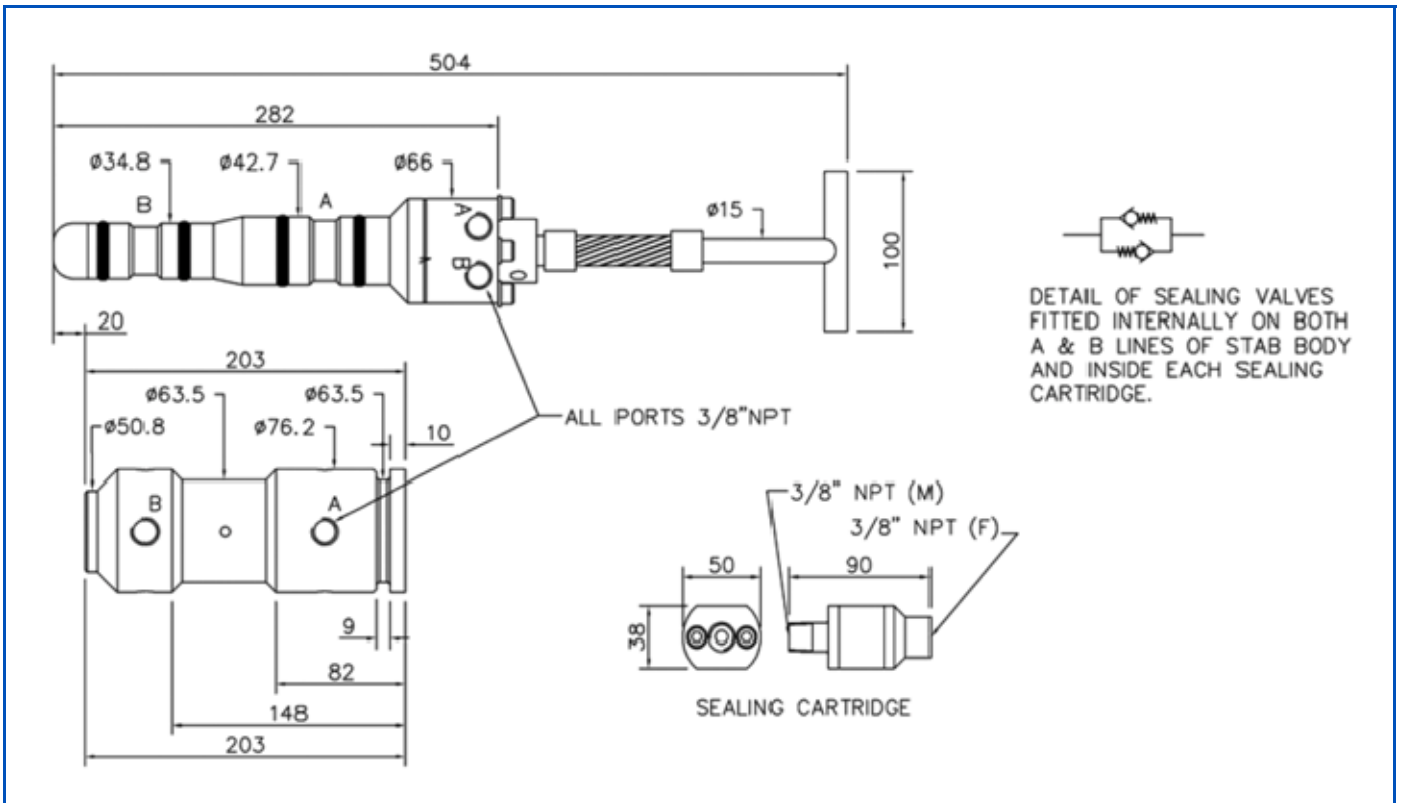
The male has four check valves set inside the male body. These are 0.2 bar inflow, 2.5 bar outflow (i.e., will not dump the ROV compensator pressure). These minimise ROV oil leakage and water ingress, and prevent under-pressure in the hoses, etc.

The female receptacle has two screw-in cartridges that do the same, but are normally 0.2 bar in/out. The female can be mounted by U-bolts around the body or flange; mounted by four bolts using a top-mounting interface plate.

Features

- Industry Standard
- ISO 13628-8 Type A
- 3,000 psi (207 Bar)
- High Flow
- Integral Sealing Valves
- Pressure Balanced





Specifications		Options
Standard working pressure:	207 bar (3,000 psi), option 700 bar (10,000 psi)	<ul style="list-style-type: none"> ■ Alternative handles – any style to suit customer requirement ■ 700 bar seals available ■ Higher sealing valve crack pressures ■ Alternative body materials ■ Single port (ISO type B), triple port and quad port versions
Fluid:	Most hydraulic fluids and gases to 207 bar	
Weight:	4kg (male stab with handle)	
Port sizes:	All ports 3/8" NPT	
Flow path:	Nominal path 8mm diameter throughout	
Materials:	Stainless steel 316L and Duplex	
Data Sheet: A001-350-001 issue 6		

The specification details are illustrative for marketing purposes only. Actual equipment may be different as a result of product improvement or other reasons. Specific interface and performance information should be reconfirmed at time of order placement.