

High Flow 3" Bore Stab

The 3" bore single port stab is designed for use with high flows at low or medium pressures. It is ideal for suction anchor operations with a very low weight for its size. The male stab has an aluminum body and plastic hose. A pipe barb suits push-on 3" suction hose and clamps.

The receptacle can be supplied with a pipe weld stub, a flange, or for flush mounting. The flush mounted version has a vent tube to prevent pressure lock. All can be supplied with or without locking pins – the stab is inserted and rotated 45 degrees to lock.

Plastic dummy male and female are also available.

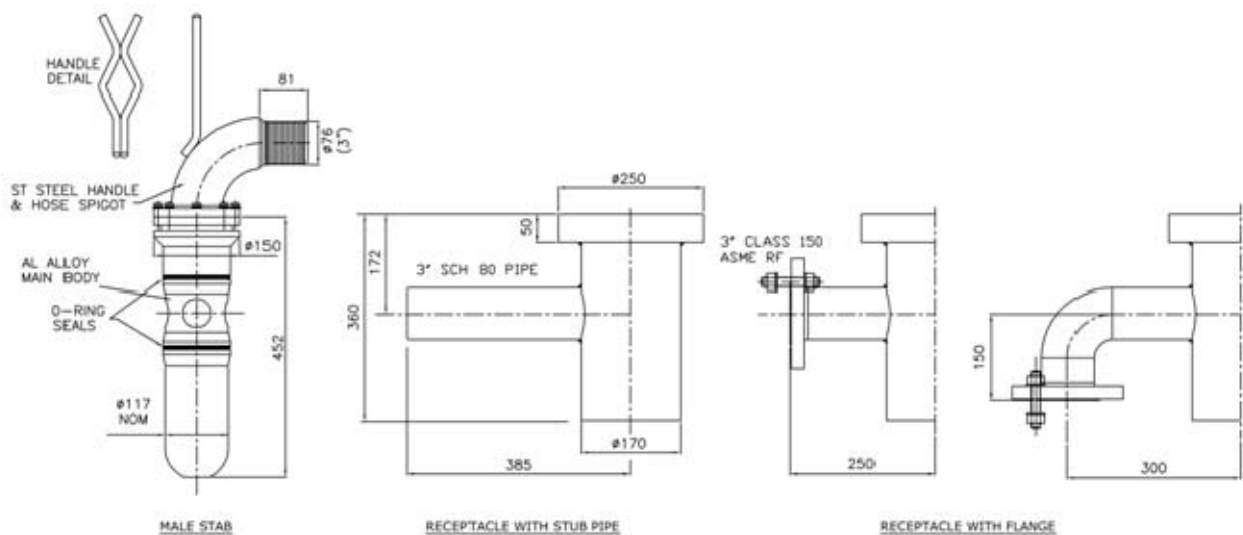
Features

- 10 Bar Operating Pressure in either Suction or Pumping
- Pressure Balanced
- Low Male Weight for Easy Handling
- Pressure Balanced

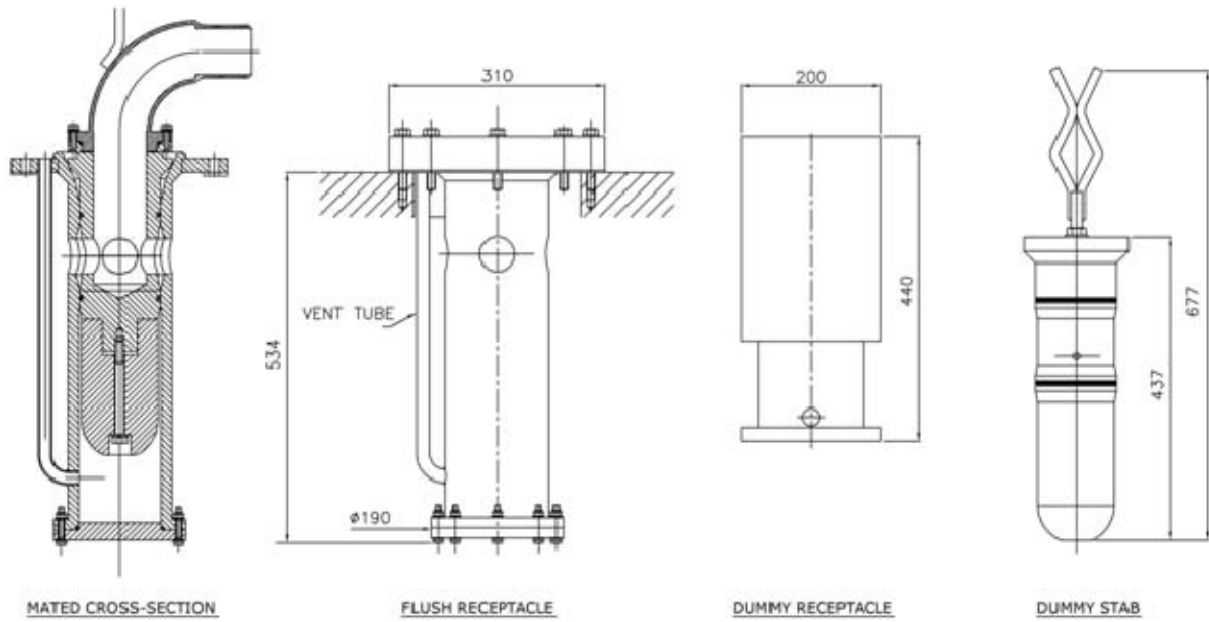


Flush and pipe mount receptacles

Dimensions



Dimensions and Details



Specification

Maximum Pressure:	+/- 10 Bar
Hose Barb OD:	3" (to Suit 3" Bore Flex Hose)
Pipe Weld Stud:	3" sch 40 (OD 88.9mm x ID 77.9mm)
Materials:	Male-Aluminium Alloy Main Body, ST Steel Handle and Hose Spigot, UHDPE Guide Nose
Female:	ST Steel Body-Xylan Coated
Dummy:	UHDPE
Fluids:	Most Liquids

Data Sheet: A001-350-016 issue 6

The specification details are illustrative for marketing purposes only. Actual equipment may be different as a result of product improvement or other reasons. Specific interface and performance information should be reconfirmed at time of order placement.